



DVD recorder with
DESR-7000/DESR-5000 hard disk

Instruction Manual (Supplementary Collection)

Thank you for purchasing the DESR-5000/7000.

This unit has been upgraded to version 1.10 at the time of purchase.

No need to upgrade to version 1.10.

This manual (supplemental collection) explains the functions of this unit that have been added or changed due to the version upgrade to version 1.10.

Items changed or added in version 1.10



Supports re-extending setting during extended recording



Change the order of recorded videos

Skipping (returning) the video to a slightly earlier scene

Supports 30x speed for fast-forward and fast-reverse

(search) In addition to 2x, 10x, and 120x, 30x search is now available.

For details on searching, refer to page 42 of the instruction manual that comes with the "PSX" unit.

Reduced dubbing time

The writing speed to DVD has increased from 12x to 24x, making dubbing faster than ever before.



Supports playback of MP3 format songs recorded on CD-R

Supports importing MP3 format songs recorded on CD-R to hard disk



Displaying and importing photos saved in TIFF

format You can display and import TIFF format photos taken with a digital camera on this unit. The operation method is the same as for JPEG format photos. For details, refer to page 54 of the instruction manual that comes with the "PSX" .

Supports character input with **other** "PlayStation 2" compatible keyboards (USB connection)

Added character input setting to settings

Added keyboard settings to settings

Added L2/R2 button settings to video settings

Items changed/added in version 1.10

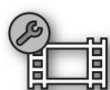
enjoy the video



Changing the order of recorded videos
Skip the video to the next scene (flash)



Playing MP3 songs
Importing MP3 songs into this unit



Enjoying music Video settings

Setting the L2/R2 buttons on the remote control

keyboard settings

Setting the keyboard type
Setting the character input start time when the key is pressed and held
Setting the character input speed when you press and hold the key
Setting Japanese Input Method
Setting key binding

others

Connecting a keyboard
Trademark



enjoy the video

Change the order of recorded videos

You can check the order of the currently displayed images in the upper left corner of the screen.

You can

You can now sort the list of recorded videos.

vinegar.

Step1



Mm<, for home menu

Filmed from

Select an image and press .

The video options screen will appear.

Video option screen



Current sort order

Step2



Use Mm to select [Change Order] and press .

Each time is pressed in "Change sort order", the

The sort order is switched in the following order.

Date order (newest first)

m

Date order (oldest first)

m

Name order (y)

m

Name order (y)

m

Genre order

Unviewed order

Skip the video to the next scene and play it back (flash)

on the operation panel ◀️⏪ (flash-) ⏩▶️ (flash+)

A button has been added that allows you to skip (return) to a scene about 15 seconds ahead (backward).
) will be available for playback.

Step1



Press while playing a video. The video control panel will be displayed.

Step2



Flash+/Flash-
Mm<, (flash) ◀️⏪ ⏩▶️
Select (Flash +) and press .
◀️⏪ (Flash-) (Flash ⏩▶️
+) is selected and pressed once for about 15 seconds.
You can skip (return) to the previous (back) scene.
to come. Press twice to move forward (backward) about 30 seconds
You can skip (return) to the next scene.

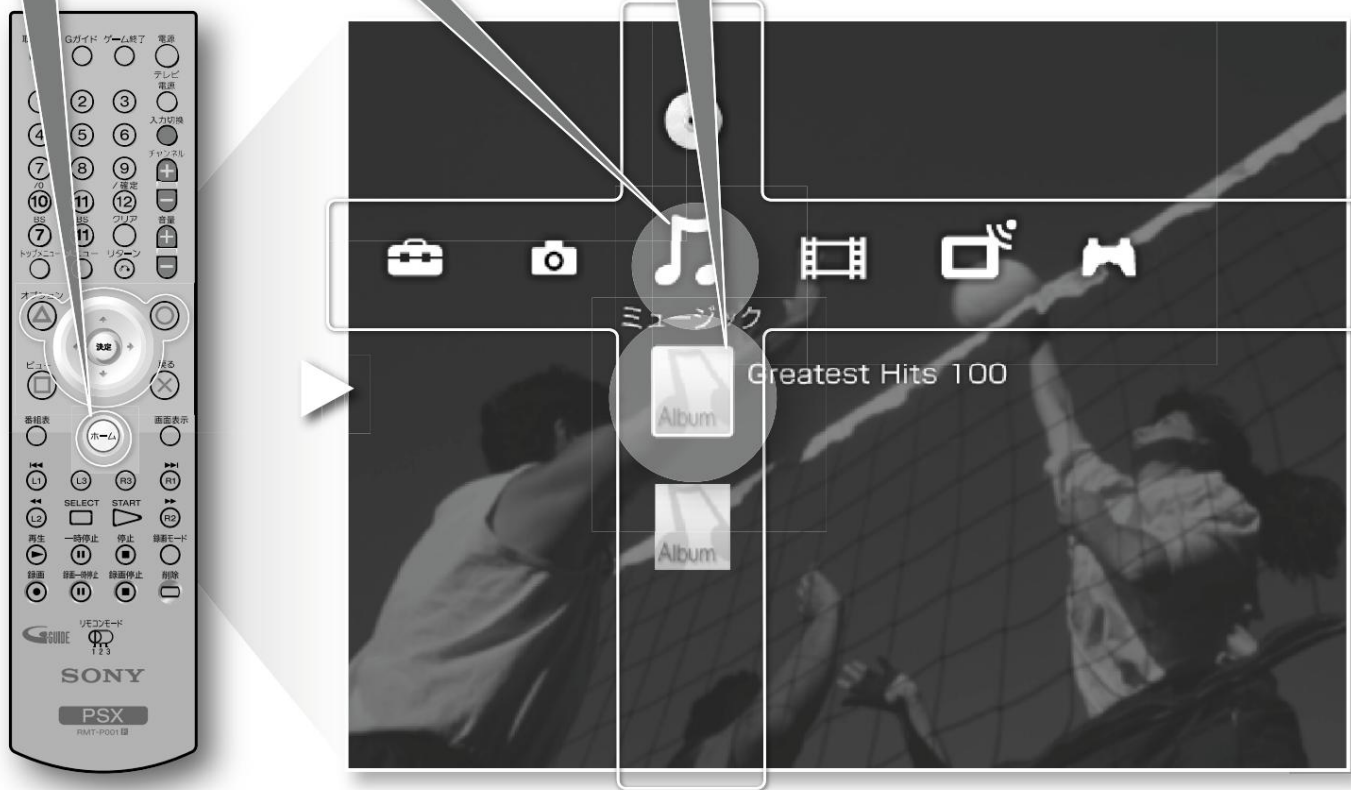


enjoy music

Play MP3 songs

MP3 files (songs) saved on a CD-R on a computer, etc., or MP3 files imported to this unit
You can play files.

Press **Step 1** **Step 2** **Step 3** or select and press



Explanation of icons that can be selected with

icon	Select and press
	Album Lists the songs in the album.

Icon displayed when a data CD is inserted

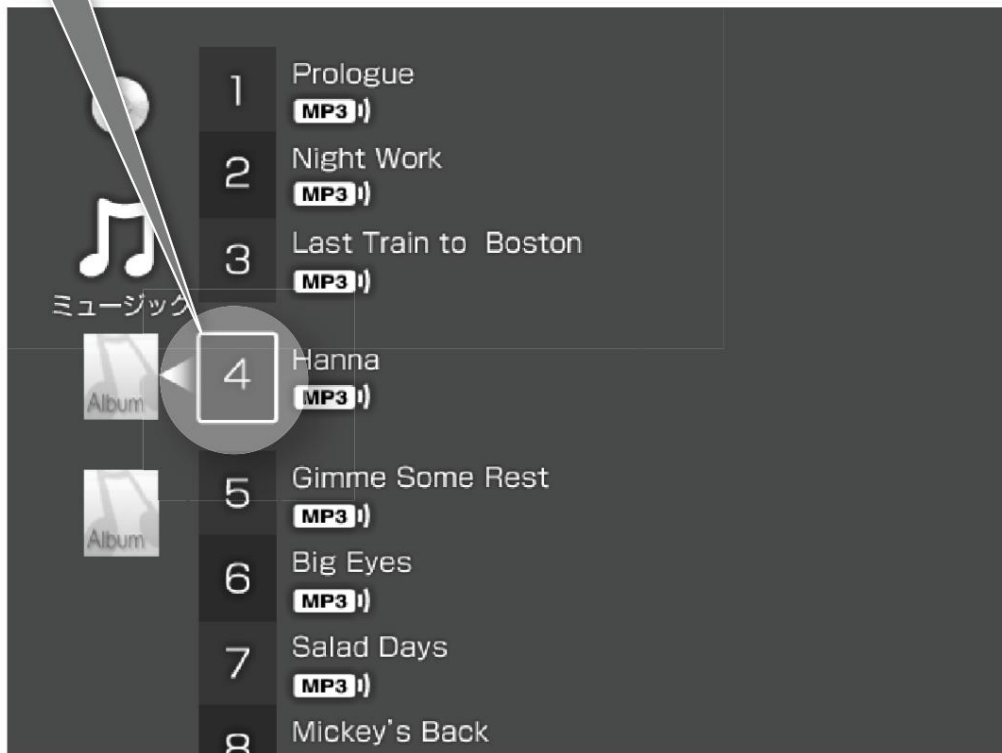
icon	Select and press
	Displays a list of songs recorded on the data CD CD-R.

please note

MP3 files saved on discs other than CD-R
Files cannot be played on this unit.
not.

Step 4 Select the song or folder you want to listen to and press

If you selected a folder in Step 4, the songs will be displayed after you select the folder. select the song you want to listen to and press To do.





enjoy music

Playing MP3 songs (continued)

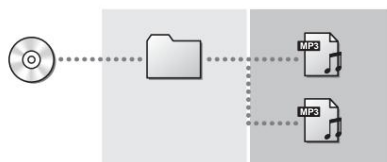
Precautions when playing MP3 files saved on a CD-R on this unit

MP3 files that can be played on this unit must be saved using the following methods. CD-R only. MP3 files saved in other ways cannot be played.

Creating and saving folders and files

Create a folder directly under (root) of the CD-R, and Save your MP3 files inside.

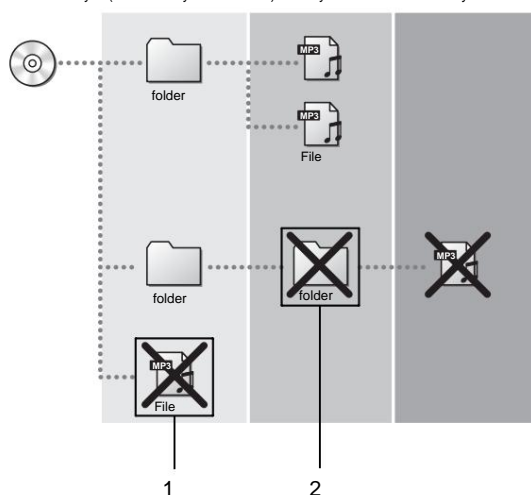
CD-R 1st layer (immediately below CD-R) 2nd layer



Precautions when creating and saving folders and files

- **Folders** that do not contain MP3 files and MP3 files written directly under the CD-R (root) are not recognized by this unit (1).
- Do not create folders within folders (2).

CD-R 1st layer (immediately below CD-R) 2nd layer 3rd layer



- Do not create more than 40 folders on one CD-R.

stomach.

- Do not save more than 31 MP3 files in one folder.
please leave

Precautions when naming folders and files

- Set the file name within 64 characters.
- Do not use single-byte characters such as "<", ">", "|", "\", "/", "\\", "*", ":", "?", and "\".
- File names and folder names may not be displayed correctly if they do not conform to ISO9660 Level 1, Level 2, Extended Format (Joliet).
- When naming the file, add the extension ".mp3" to the end of the file.
- If you add the extension ".mp3" to a file other than MP3 format, the file may be played back, which may cause noise or malfunction.

- **Track** names in MP3 files on a CD-R are displayed with reference to ID3 tag information if an ID3 tag exists, but there is a limit to the number of characters.

- **Track** names of MP3 files imported to the HDD are displayed as file names, but the number of characters is limited.

Precautions when writing MP3 files to a CD-R on a computer

- Be sure to use a CD-R.
- Be sure to write with "Disc at once".
- Do not write to a CD-R that has already been written.
- Depending on the state of the disc, it may not be possible to play it.
- Discs recorded in multisession cannot be played.
- CD-RW is not supported.
- Packet light is not supported.

Formats supported by this unit

CD-R file system	file name character limit
ISO9660 Level 1	8.3 Form
ISO9660 Level 2 Maximum 31 single-byte characters (including extension)	
Extended format (Joliet only) Maximum 64 single-byte characters (including extension)	

⁹ Folders are only supported up to one level.

Standards for writing to CD-Rs supported by this unit

project	MPEG1 Layer3	MPEG2 Layer3
Compatible with write mode mode 1 and mode 2 (Form1)		
Compression method (sampling rate)	48k,44.1k,32k	24k,22.05k,16k
bit rate	32k ~ 320kbps VBR is also possible*	8k ~ 160kbps VBR is also possible*
number of files	30 (per folder)	
39 albums (folders)		
album (folder) hierarchy	1	
No multi-session support		
m3u playlist not supported		
mp3PRO format	incompatible	

⁹ For VBR, the elapsed playback time display may differ from the actual time.

vinegar.



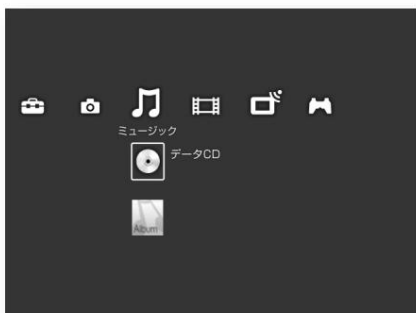
enjoy music

Importing MP3 songs to this unit

Importing MP3 files saved on a CD-R to this unit
I can.

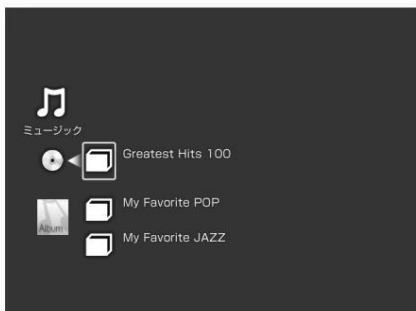
Import by folder

Step1



Mm<, for home menu from
Select (Data CD) and press .

Step2



Use Mm to select the folder you want to import
push.
A folder options menu will appear.
increase.

Step3



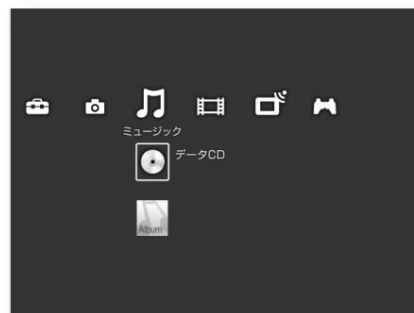
Use Mm to select [Import] and press .
Importing will start. on screen instructions
Therefore, import MP3 files.

stomach.

The songs are imported to the specified album.

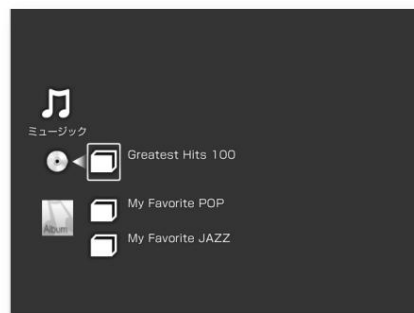
Import MP3 files

Step1



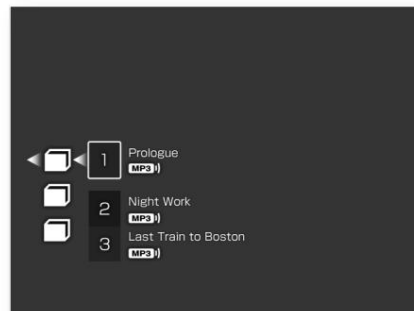
Mm<, for home menu from
Select (Data CD) and press . A
folder will appear.

Step2



Use Mm to select a folder and press .

Step3



Select the MP3 file (song) you want to import using Mm.
Press and .

Step4

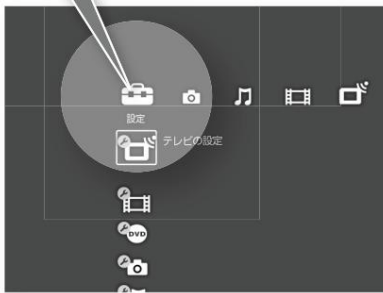


Use Mm to select [Import] and press .
Importing will start. Follow the on-screen
instructions to import MP3 files.

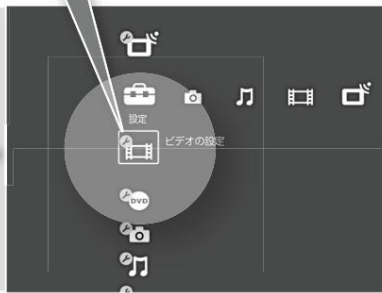
Video (picture) settings

How to open the video setting screen

Choose Step 1



Step 2 select and press



Video setting screen



Setting the L2/R2 buttons on the remote control

Change remote control L2/R2 button settings

Then, the remote control can also use the flash.

You will be able to

1 Select Mm [L2/R2 button settings] and (決定)

press .

2 Select Mm [Flash] and press . (決定)

L2 is Flash-, R2 is Flash+

will be

About L2/R2 button settings

project	Select
search	this when you want to skip to the desired scene while fast-forwarding or fast-reversing the video.
Select when you want to skip (rewind) the flash image to the scene about 15 seconds ahead.	

If you perform the above settings, the separately sold "PSX" dedicated analog controller (DESR-10)

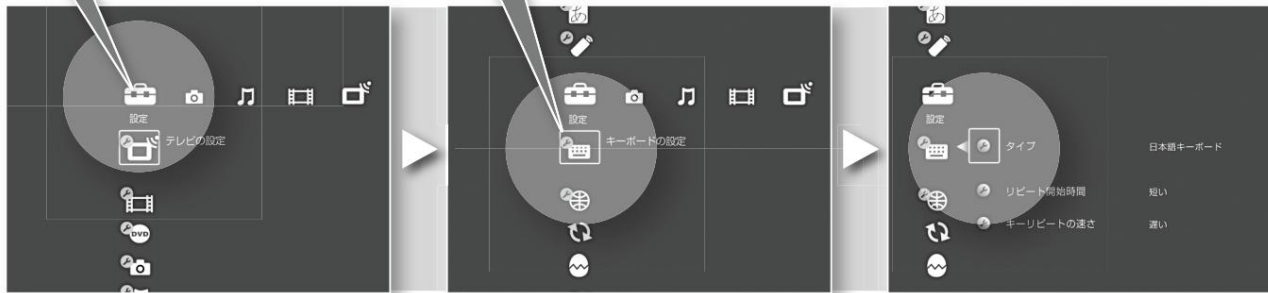
The L2/R2 button will also switch at the same time.

keyboard settings

How to display the keyboard setting screen

Step 1 Choose

Step 2 select and press



Setting the keyboard type

When connecting an English keyboard, settings.

- 1 Use Mm to select [Type] and press .
- 2 Select the keyboard type with Mm and press . push.

Item list

English keyboard

Select when an English keyboard is connected.

japanese keyboard

Select when a Japanese keyboard is connected.

Setting the character input start time when the key is pressed and held

When you press and hold a key on your keyboard, Time before character is repeated adjust the

- 1 Use Mm to select [Repeat start time] and press .
- 2 Use Mm to select a setting and press . item list short

short

Press and hold the key to quickly type the same character.

It's a

standard setting.

long

Even if you press and hold the key, there is a slight delay before the same character is entered continuously.

Even if you press and hold by mistake, you can prevent the same character from being entered continuously.

Setting the character input speed when the key is pressed and held

Sentence entered when key is pressed and held Set the character input speed.

- 1 Use Mm to select [Key repeat speed] and press .
- 2 Use Mm to select a setting and press . item list slow

slow

Input speed slows down.

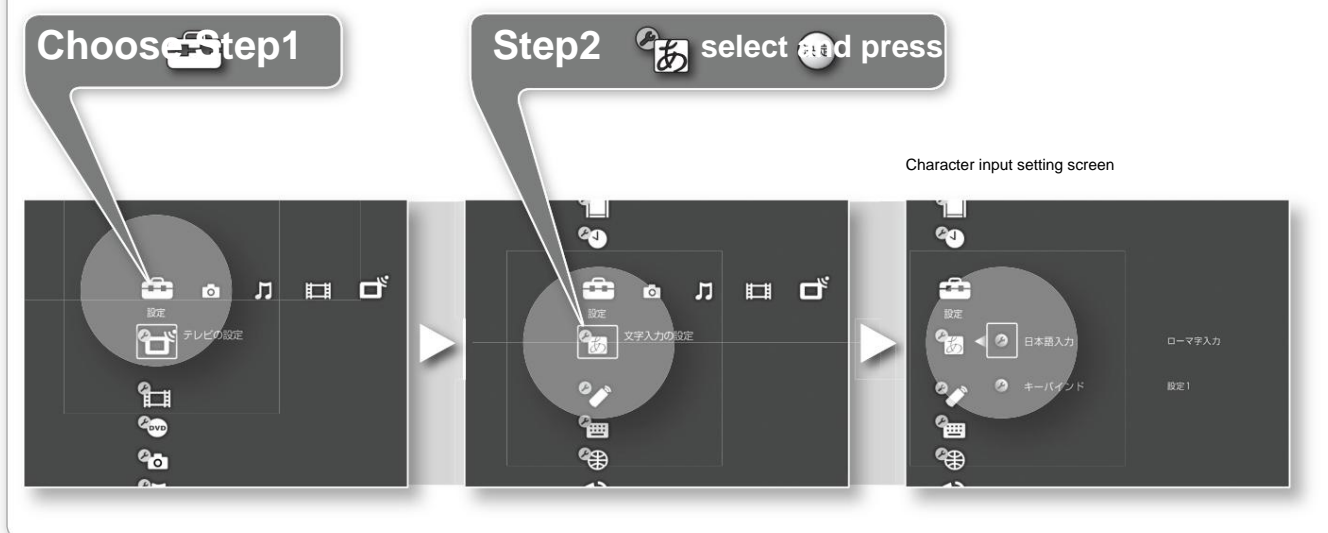
It's a

standard setting.

Faster

typing speed makes it faster.

How to open the character input setting screen



Setting the Japanese input method

There are two input methods: romaji input and kana input.

- 1 Use Mm to select [Japanese Input] and press .
- 2 Use Mm to select the input method and press .

Item list

Romaji input

Enter Japanese in romaji using the alphabet keys.

Kana

input Use the Kana key to input Japanese.

Setting key bindings

Set the Japanese conversion method. There are two types of settings for this unit, so select the setting that is most convenient for you.

- 1 Use Mm to select [Key Bind] and press .決定

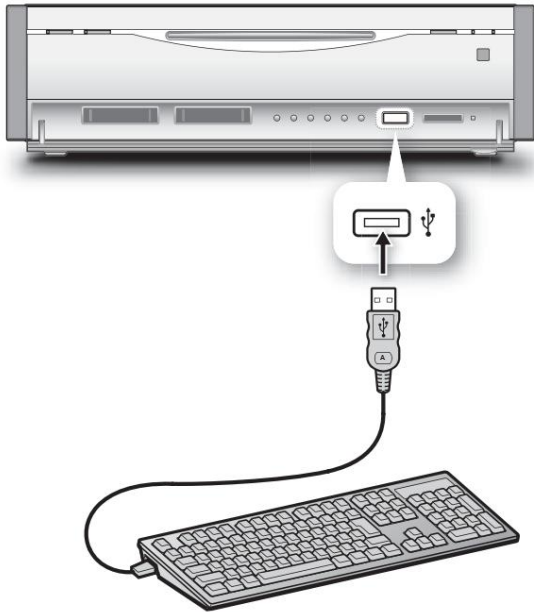
vinegar.

- 2 Use Mm to select a setting and press .

others

connect keyboard

By connecting a "PlayStation 2" compatible keyboard to this unit using the USB port, you can enter characters without using the on-screen keyboard. can be entered.



Make keyboard settings and character input settings as necessary. For details on the setting method, see "Keyboard settings" (page 12).

Trademarks

"PSX", "PlayStation", "DUALSHOCK" and "PocketStation" is Sony Computer Entertainment Inc. is a registered trademark of In addition, "DNAS" is a trademark of the company. "SONY" is a registered trademark of Sony Corporation.

- TIFF Software

Copyright © 1988-1997 Sam Leffler

Copyright © 1991-1997 Silicon Graphics, Inc.

- libjpeg

This Software is based in part on the work of the Independent JPEG Group.

glossary

MP3 (mp3)

One of the music formats, MPEG

An audio compression standard standardized by
Despite the high compression ratio, the high
sound quality can be preserved.

This unit can record MP3 files created on a computer, etc.

Play files or hard disk

You can also import it to a

TIFF

It is one of the image file formats. on this machine
is a TIFF file saved with a digital camera.
files or store them on your hard disk.

You can take it in.

Disc at once

(disc at once)

This is one method of writing to a CD-R.

How to write all data at once

is.

CD-Rs written using this method cannot be played on this unit.
can only be played.

write mode

This is the standard for recording CD-ROMs.

Joliet

CD-ROM logical file format

It is a standard for

ISO9660 [ISO9660]

CD-ROM logical file format

It is a standard for

multi session

Write multiple sessions on a single CD-R

It's a way of getting in. track at one

Multi-set CD-Rs that have been written with a
will be an option.

ID3 tag [ID3 tag]

Adding titles and art to MP3 files

A convention for adding information such as the name of the
It's class.

bit rate

It expresses how much information is available in one second.
is an indicator. The larger the number, the more unit time
Since there is a large amount of information about
Better quality too.

VBR

Automatically adjusts the amount of data in a song to improve sound quality
minimizes file size without compromising

This is a function to keep it to a minimum.

m3u

It is one of the play list file formats.

mp3PRO [MP3 Pro]

MPEG-1 Audio Layer 3 proprietary extended
standard.

packet light

When writing data to a CD-R, the data
data is divided into units called packets.

It is a recording method that writes

8.3 Form

A standard that defines the format of file names.

For 8.3 format, the file name is half-width

8 characters or less, extension 3 characters or less
to set.

extension

A character that indicates the file type
column. For MP3 files, the file

Add a "." after the file name and add
the extension "mp3".

example)

ongaku.mp3
| | | |
filename extension
dot

商品の修理、お取り扱い方法、お買物相談などの問い合わせ

ホームページ ● <http://www.sony.co.jp/SonyDrive/>

「ソニードライブ」は、ソニーの商品情報とライフスタイルをご提案するホームページです。
「良くあるご質問」「修理情報」「ショッピング情報」は、ホームページをご活用ください。

お客様ご相談センター

● ナビダイヤル*.....  0570-00-3311

(全国どこからでも市内通話料でご利用いただけます)

● 携帯電話・PHSでのご利用は*..... 03-5448-3311

(ナビダイヤルがご利用できない場合はこちらをご利用ください)

● FAX 0466-31-2595

受付時間：月～金曜日 9:00～20:00 土・日・祝日 9:00～17:00

*お電話は自動音声応答にてお受けし、内容に応じて専門の相談員が対応します。
はじめにご用件を下記より、次に音声案内にそって商品カテゴリーの番号を押してください。
選択番号は変更になることがありますので、ご容赦願います。

- 1：修理受付
- 2：使用方法や故障と思われるご相談
- 3：お買物相談
- 4：業務用・プロ用商品に関するご相談全般
- 5：その他のご相談

ソニー株式会社 〒141-0001 東京都品川区北品川 6-7-35



This manual uses 100% recycled paper and
VOC (Volatile Organic Compounds) zero vegetable oil ink.

Printed in Japan